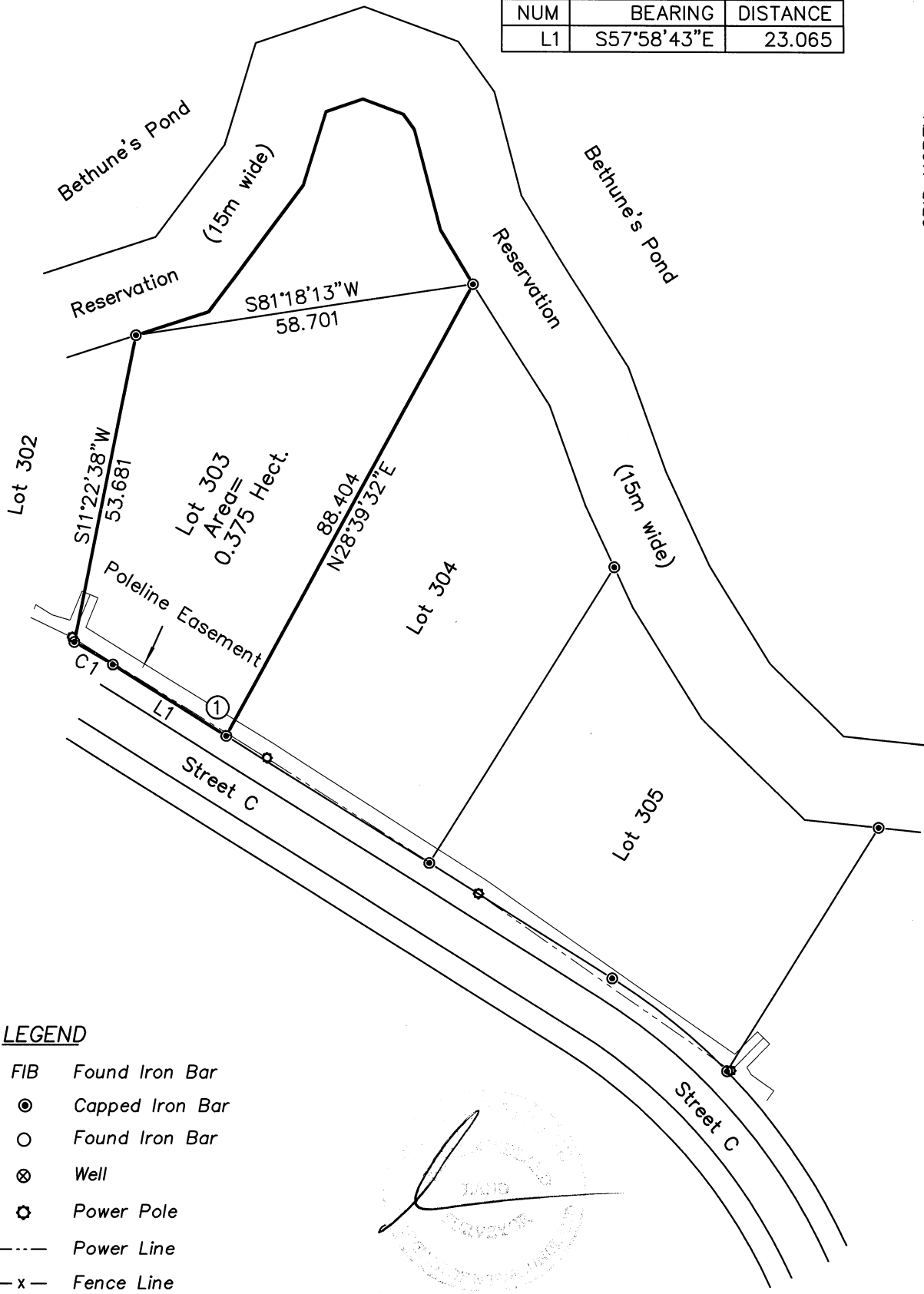
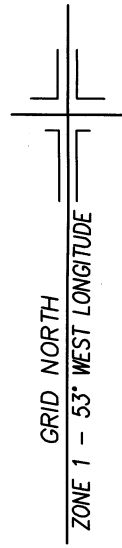


Schedule "B"

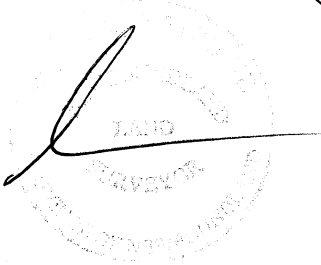
NUM	ARC	RADIUS	BEARING	DISTANCE
C1	7.692	107.500	S60°01'42"E	7.690

NUM	BEARING	DISTANCE
L1	S57°58'43"E	23.065



LEGEND

- FIB Found Iron Bar
- ⊙ Capped Iron Bar
- Found Iron Bar
- ⊗ Well
- ⊛ Power Pole
- Power Line
- x - Fence Line



Note: Poleline Easement as per NL Power Easement Drawing # 2-1145-31-16A

Linear Measurement Horizontal Ground Distances.

All Boundary Lines Cut or Open.

NAD 83 Reference Datum.

Co-ordinates derived by RTK GPS.

Control Monument 82374 used in Control Tie.

① N5,252,395.976
E 265,168.335

© Wilfred J. Thorne, Newfoundland Land Surveyor, 2014. Unauthorized use, alteration or reproduction of this Survey Plan is prohibited by law as outlined in "The Copyright Act". However, use and reproduction thereof by or on behalf of the person to whom this Survey Plan was prepared is permitted, provided that no alterations whatsoever are made thereto.

<p>W.J. Thorne Surveys Limited 298 River Road, Blaketown, NL</p>	
<p>Plan Of Land Surveyed For Goose Pond Properties Phase 7 - Lot 303 Whitbourne</p>	
<p>Scale: 1 : 1000</p>	<p>Survey By : WT/RM/SG</p>
<p>Job No. 214294</p>	<p>Date : October 28, 2014</p>