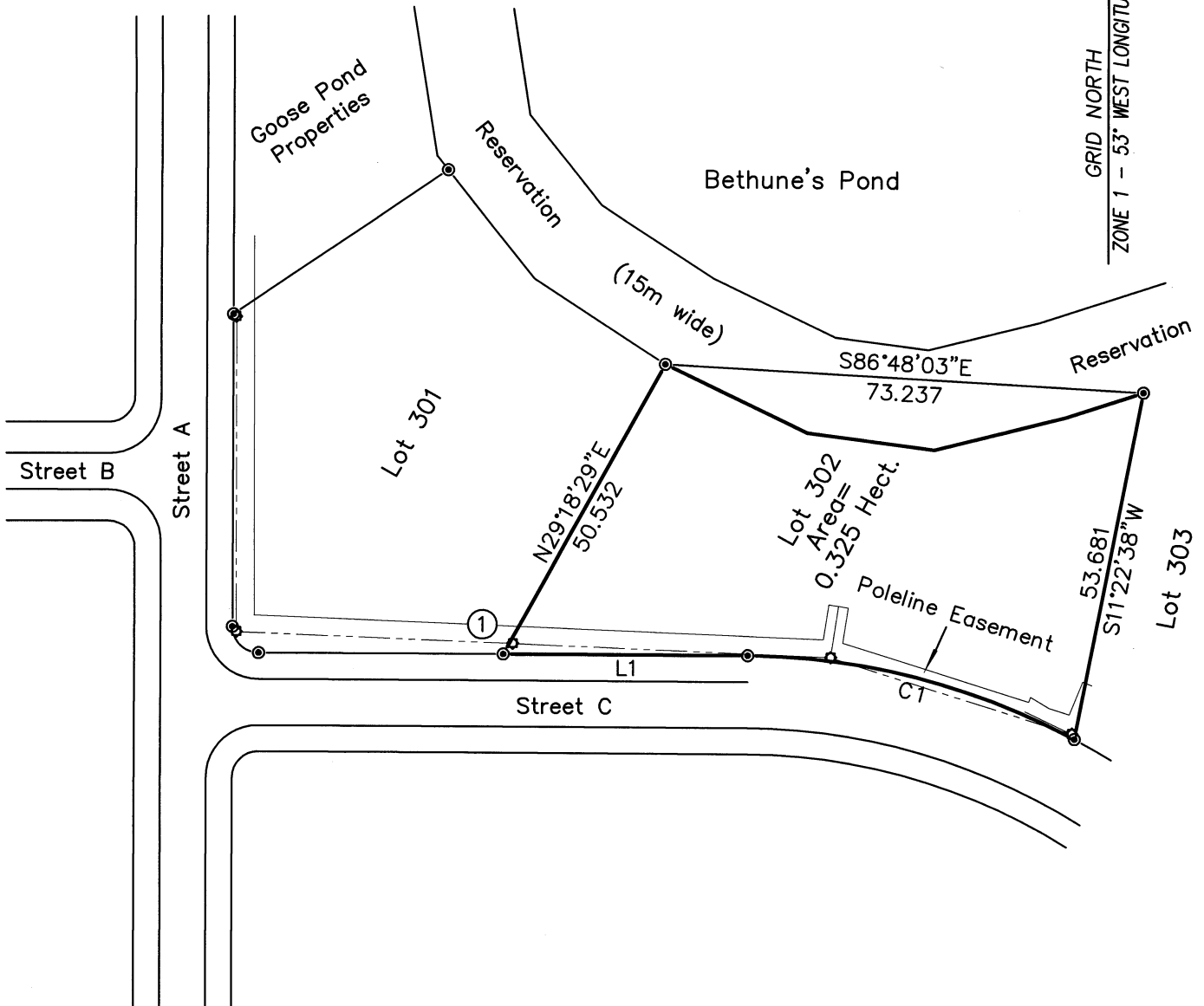
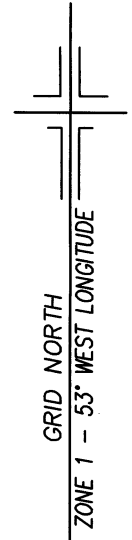


# Schedule "B"

NUM	ARC	RADIUS	BEARING	DISTANCE
C1	51.996	107.500	N75°56'05"W	51.491

NUM	BEARING	DISTANCE
L1	N89°47'28"W	37.323



## LEGEND

- FIB Found Iron Bar
- ⊙ Capped Iron Bar
- Found Iron Bar
- ⊗ Well
- ⊛ Power Pole
- Power Line
- x- Fence Line

Note: Poleline Easement as per NL Power Easement Drawing # 2-1145-31-16A

Linear Measurement Horizontal Ground Distances.

All Boundary Lines Cut or Open.

NAD 83 Reference Datum.

Co-ordinates derived by RTK GPS.

Control Monument 82374 used in Control Tie.

① N5,252,424.697  
E 265,054.848



© Wilfred J. Thorne, Newfoundland Land Surveyor, 2014. Unauthorized use, alteration or reproduction of this Survey Plan is prohibited by law as outlined in "The Copyright Act". However, use and reproduction thereof by or on behalf of the person to whom this Survey Plan was prepared is permitted, provided that no alterations whatsoever are made thereto.

<p><i>W.J. Thorne Surveys Limited</i> 298 River Road, Blaketown, NL</p>
<p><i>Plan Of Land Surveyed</i> For <i>Goose Pond Properties</i> Phase 7 - Lot 302 Whitbourne</p>
<p>Scale: 1 : 1000    Survey By : WT/RM/SG Job No. 214294    Date : October 28, 2014</p>